

**FEATURES**

- Active power factor correction (PFC)—0.99 typ.
- Compliant to IEC1000-3-2
- Continuous wide-range input voltage
- Meets international safety standards
  - UL1950 Recognized
  - CSA C22.2 No. 950 Certified
  - IEC950/EN60950 (TUV Certified)
- CE Mark (LVD)
- Built-in EMI filter (conducted)
  - FCC Part 15 Level B
  - CISPR Pub. 22 Level B
  - VCCI Class B
- Surge immunity to 4kV (Input to Chassis)

**AUXILIARY FEATURES**

- LED operating indicator
- Remote ON/OFF (optional)

**SPECIFICATIONS**

**INPUT**

Voltage	85-264 VAC (continuous) (90-264 VAC between -10 to 0°C)
Frequency	47-63 Hz
Current	
Full Load	120V 0.4 - 0.6 (RMS) 240V 0.2 - 0.3 (RMS)
Inrush	120V - 20A (TYP) 240V - 40A (TYP)

**OUTPUT**

Total Regulation	±5.0%
Ripple & Noise (peak-to-peak)	100mV or 1% (whichever is larger) (measured at 25°C with a bandwidth of 100 MHz)
Hold-up Time	20mS min. (measured at nominal input voltage, full load, 25°C)
Start-up Time	15 (max)

**PROTECTION**

Overvoltage	All models are protected against over-voltage. Control circuit is preset so output voltage does not exceed the following values:												
	<table border="1"> <tr> <td>Output V</td> <td>3.3</td> <td>5.0</td> <td>12</td> <td>15</td> <td>24</td> </tr> <tr> <td>OVP</td> <td>4.5</td> <td>6.9</td> <td>15.5</td> <td>19.5</td> <td>30</td> </tr> </table>	Output V	3.3	5.0	12	15	24	OVP	4.5	6.9	15.5	19.5	30
Output V	3.3	5.0	12	15	24								
OVP	4.5	6.9	15.5	19.5	30								
Overload	All models are protected against overload and short circuit. Recovery is automatic after removal of the fault.												
Remote ON/OFF	Optional												

**ISOLATION**

Input to Chassis	2000VAC for 1 minute
Input to Output	3000VAC for 1 minute
Output to Chassis	500VAC for 1 minute
Insulation	100MΩ at 500VDC
Leakage Current	0.3mA (max) at 120VAC, 60Hz per UL1950, EN60950 0.75mA (max) at 254.4VAC, 60Hz per CSA22.2 No. 950 0.25mA (max) at 100VAC, 60Hz per JIS standard

**ENVIRONMENT**

Operating Temp.	-10°C to + 50°C at full load (derated to 50% from 50°C to 60°C)
Operating Humidity	20% - 90% relative humidity (non-condensing)
Storage Temp.	-30°C to + 85°C
Storage Humidity	10% - 95% relative humidity (non-condensing)
Shock	<20G
Vibration	2G, 10 - 55 Hz, 0.75mm amplitude, for 2 hours (non-operating)

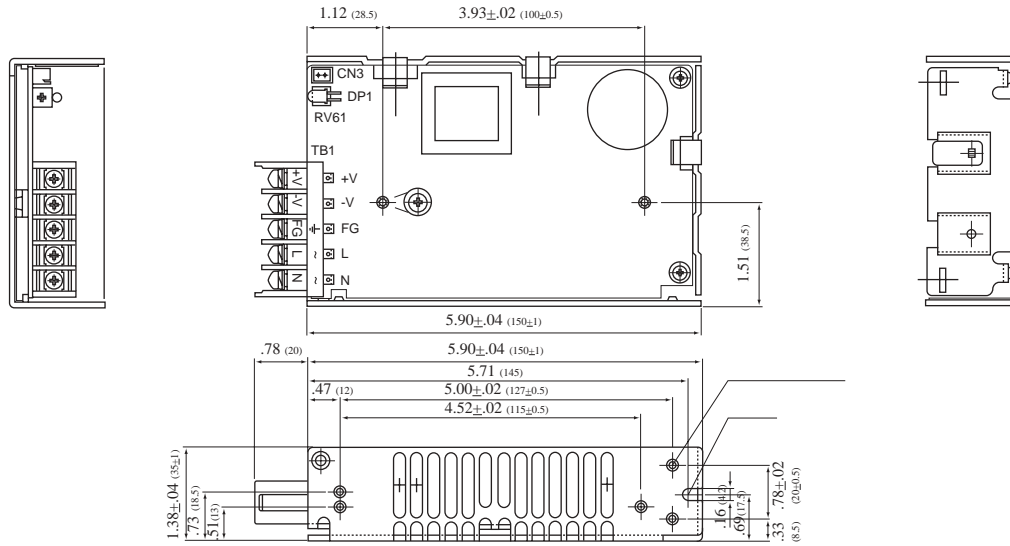
**MODEL SPECIFICATIONS**

Model #	Output Voltage ( <sup>+/-</sup> 10%)	Output Current	Efficiency	Power
JY03010G	3.3V	0-10A	63%	33W
JY05010G	5.0V	0-10A	70%	50W
JY124R2G	12.0V	0-4.2A	75%	50W
JY153R5G	15.0V	0-3.5A	77%	50W
JY242R1G	24.0V	0-2.1A	81%	50W
JY48001G	48.0V	0-1A	70%	50W

**MECHANICAL SPECIFICATIONS**

Size (W + D + H) 50W: 3.7 x 5.9 x 1.4 inches (93 x 150 x 35 mm)

Weight : 0.9 lbs. (0.4 kg)



**CONNECTOR DESIGNATIONS**

TB1

Designation	Function — 50W
N	Line-Neutral
L	Line-Hot
FG	Frame Ground
-RS	—
-V	Negative Output
+V	Positive Output
+RS	—

Connections made to terminal block TB1 with M3 hardware.

CN3

Designation	Function — 50W
CN3-1	Remote ON/OFF (optional)
CN3-2	Remote ON/OFF (optional)

Connections made to CN3 pins with mating female connector supplied.

*All specifications are subject to change without notice.*