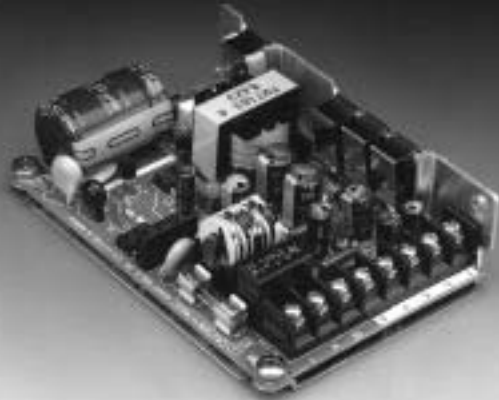


30 Watt FYM Series



FEATURES

- High Power Density
- Universal Input
- UL1950/CSA 22.2 No. 234/EN60950/CE
- FCC/DE Level B EMI Filter
- Dual- and Triple-Output Versions
- Choice of Pin-Type or Terminal Block Connections

SPECIFICATIONS

INPUT

Voltage	85 - 264 VAC (continuous range)
Frequency	47 - 63 Hz
Current	
Full load	100 VAC - 0.77A (RMS)
200 VAC	- 0.46A (RMS)
Inrush	120 VAC - 10A
240 VAC	- 20A

OUTPUT

Rated Power	
Dual Output	28.8 Watts
Triple Output	30.0 Watts
Efficiency	
Dual Output	68%
Triple Output	65%
Voltage	See Model Selection Table
Voltage Adjustment	
Dual Output	Voltages are fixed and not adjustable
Triple Output	
5V Output	5.0 - 5.1 VDC using potentiometer
±12/15V Outputs	Fixed and not adjustable
Total Regulation	
Dual Output	
+12/15V Outputs	±5%
-12/15V Outputs	±6.5%
Triple Output	
5V Output	±5%
±12/15V Outputs	±6.5%
Ripple & Noise (peak-to-peak)	
5 V Output	100 mV
±12 V Outputs	120 mV
±15 V Outputs	150 mV
	(measured at 25°C with a bandwidth of 50 MHz)
Hold-up Time	15 mS
	(measured with an input of 100 VAC and 100% rated output)
Converter Topology	Single Transistor Converter
Operating Frequency	150 KHz

PROTECTION

Overvoltage	The 5V output on triple-output and the positive polarity output of dual output models are protected against overvoltage. The control circuit is preset so the output voltage does not exceed the following values:								
	<table border="1"> <tr> <td>Output Voltage</td> <td>5</td> <td>12</td> <td>15</td> </tr> <tr> <td>OVP Setpoint (max)</td> <td>6.9</td> <td>15.5</td> <td>20.0</td> </tr> </table>	Output Voltage	5	12	15	OVP Setpoint (max)	6.9	15.5	20.0
Output Voltage	5	12	15						
OVP Setpoint (max)	6.9	15.5	20.0						
Overload	All models are protected against overload and short circuit. Recovery is automatic after removal of the fault.								
Common Mode Noise	1.5V (peak-to-peak)								
Input Noise Transient	1000 VAC, 800 nS								
ESD Tolerance	10 KV								

INSULATION

All models meet the requirements of UL1950, CSA22.2 No. 234 and EN60950 for Input-to-Chassis, Input-to-Output, Output-to-Chassis and Leakage Current specifications.

Isolation Voltage	
Primary-Frame Ground	2000 VAC
Primary-Secondary	2000 VAC
Secondary-Frame Ground	500 VDC
Insulation Resistance	
Primary-Frame Ground	100 MΩ at 500 VDC
Primary-Secondary	100 MΩ at 500 VDC
Secondary-Frame Ground	100 MΩ at 500 VDC

ENVIRONMENT

Operating Temp.	0 to +60°C (derated linearly above 50°C at 5%/°C)
Cooling Method	Convection
Storage Temp.	-25 to +85°C
Shock	10G
Vibration	
Horizontal	2G, 10 - 55 Hz, 0.3 mm amplitude (non-operating)
Vertical	4.5G, 10 - 55 Hz, 0.3 mm amplitude (non-operating)

MODEL SPECIFICATIONS

Model Number	Output Ratings		
	Output No. 1	Output No. 2	Output No. 3
FYM300/51G	+5V 0.3-3.0A	+12V 0-1.2A	-12V 0-0.5A
FYM300/53G	+5V 0.3-3.0A	+15V 0-1.0A	-15V 0-0.4A
FYM300/58G	+12V 0.1-1.2A	-12V 0-1.2A	—
FYM300/59G	+15V 0.1-1.0A	-15V 0-1.0A	—

"P" suffix denotes vertical pin-type connectors for input and output.
"T" suffix denotes vertical screw-type terminal block connections for input and output.

ESYSCO AG

Sennweidstrasse 45
CH-6312 Steinhausen
Tel. +41 41 7401330
Fax +41 41 7401335
info@esySCO.ch

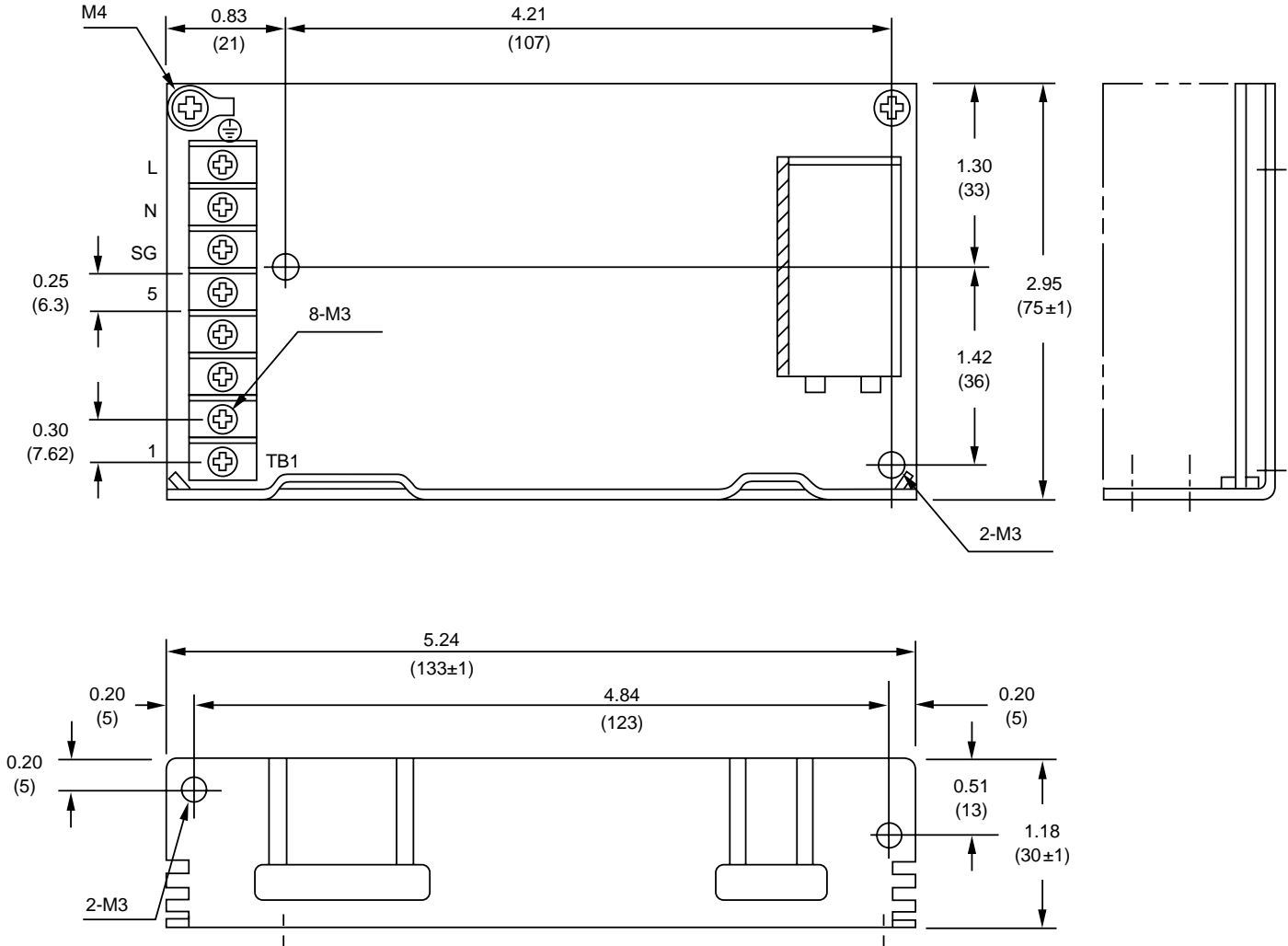
www.esySCO.com

MECHANICAL SPECIFICATIONS

Construction Open frame with integral L bracket.
Optional cover available.

Size (W x D x H) 5.24 x 2.95 x 1.2 inches (133 x 75 x 30 mm)

Weight 9 oz. (260 g)



Dimensions in inches; () Dimensions in mm.

INPUT/OUTPUT

	FYM300/51GT	FYM300/53GT	FYM300/58GT	FYM300/59GT
L	AC (L)	AC (L)	AC (L)	AC (L)
N	AC (N)	AC (N)	AC (N)	AC (N)
SG	SG	SG	SG	SG
5	+5V	+5V	+12V	+15V
4	G1	G1	G1	G1
3	+12V	+15V	G1	G1
2	G2	G2	-12V	-15V
1	-12V	-15V	NC	NC

For PIN Type connection information, see page 2

ESYSCO AG

Sennweidstrasse 45
CH-6312 Steinhausen
Tel. +41 41 7401330
Fax +41 41 7401335
info@esySCO.ch

www.esySCO.com