

FEATURES

- High Power Density
- Universal Input
- UL1950/CSA 22.2 No. 234/EN60950/CE
- FCC/VDE Level B EMI Filter
- Dual- and Triple-Output Versions
- Choice of Pin-Type or Terminal Block Connections

SPECIFICATIONS

INPUT

Voltage	85 - 264 VAC (continuous range)
Frequency	47 - 63 Hz
Current	
Full load	100 VAC - 0.47A (RMS)
200 VAC	- 0.29A (RMS)
Inrush	120 VAC - 20A
240 VAC	- 40A

OUTPUT

Rated Power	
Dual Output	15.0 Watts
Triple Output	17.2 Watts
Efficiency	
Dual Output	67%
Triple Output	65%
Voltage	See Model Selection Table
Voltage Adjustment	
Dual Output	Voltages are fixed and not adjustable
Triple Output	
5V Output	5.0 - 5.1 VDC using potentiometer
± 12/15V Outputs	Fixed and not adjustable
Total Regulation	
Dual Output	
+12/15V Outputs	±5%
- 12/15V Outputs	±6.5%
Triple Output	
5 V Output	±5%
±12/15V Outputs	±6.5%
Ripple & Noise (peak-to-peak)	
5V Output	100 mV
±12V Outputs	120 mV
±15V Outputs	150 mV
	(measured at 25°C with a bandwidth of 50 MHz)
Hold-up Time	15 mS
	(measured with an input of 100 VAC and 100% rated output)
Converter Topology	Single Transistor Converter
Operating Frequency	150 KHz

PROTECTION

Overvoltage	The 5V output on triple-output and the positive polarity output of dual output models are protected against overvoltage. The control circuit is preset so the output voltage does not exceed the following values:								
	<table border="1"> <tr> <td>Output Voltage</td> <td>5</td> <td>12</td> <td>15</td> </tr> <tr> <td>OVP Setpoint (max)</td> <td>6.9</td> <td>15.5</td> <td>20.0</td> </tr> </table>	Output Voltage	5	12	15	OVP Setpoint (max)	6.9	15.5	20.0
Output Voltage	5	12	15						
OVP Setpoint (max)	6.9	15.5	20.0						
Overload	All models are protected against overload and short circuit. Recovery is automatic after removal of the fault.								
Common Mode Noise	1.5V (peak-to-peak)								
Input Noise Transient	1000 VAC, 800 nS								
ESD Tolerance	10 KV								

INSULATION

All models meet the requirements of UL1950, CSA22.2 No. 234 and EN60950 for Input-to-Chassis, Input-to-Output, Output-to-Chassis and Leakage Current specifications.

Isolation Voltage	
Primary-Frame Ground	2000 VAC
Primary-Secondary	2000 VAC
Secondary-Frame Ground	500 VDC
Insulation Resistance	
Primary-Frame Ground	100 MΩ at 500 VDC
Primary-Secondary	100 MΩ at 500 VDC
Secondary-Frame Ground	100 MΩ at 500 VDC

ENVIRONMENT

Operating Temp.	0 to +60°C (derated linearly above 50°C at 5%/°C)
Cooling Method	Convection
Storage Temp.	-25 to +85°C
Shock	10G
Vibration	
Horizontal	2G, 10 - 55 Hz, 0.3 mm amplitude (non-operating)
Vertical	4.5G, 10 - 55 Hz, 0.3 mm amplitude (non-operating)

MODEL SPECIFICATIONS

Model Number	Output Ratings		
	Output No. 1	Output No. 2	Output No. 3
FYM150/58G	+12V 0.1-0.6A	-12V 0-0.6A	—
FYM150/59G	+15V 0.1-0.5A	-15V 0-0.5A	—
FYM180/51G	+5V 0.2-2.0A	+12V 0-0.5A	-12V 0-0.3A
FYM180/53G	+5V 0.2-2.0A	+15V 0-0.25A	-15V 0-0.25A

"P" suffix denotes vertical pin-type connectors for input and output.
 "T" suffix denotes vertical screw-type terminal block connections for input and output.

ESYSKO AG

Sennweidstrasse 45
 CH-6312 Steinhausen
 Tel. +41 41 7401330
 Fax +41 41 7401335
 info@esysco.ch

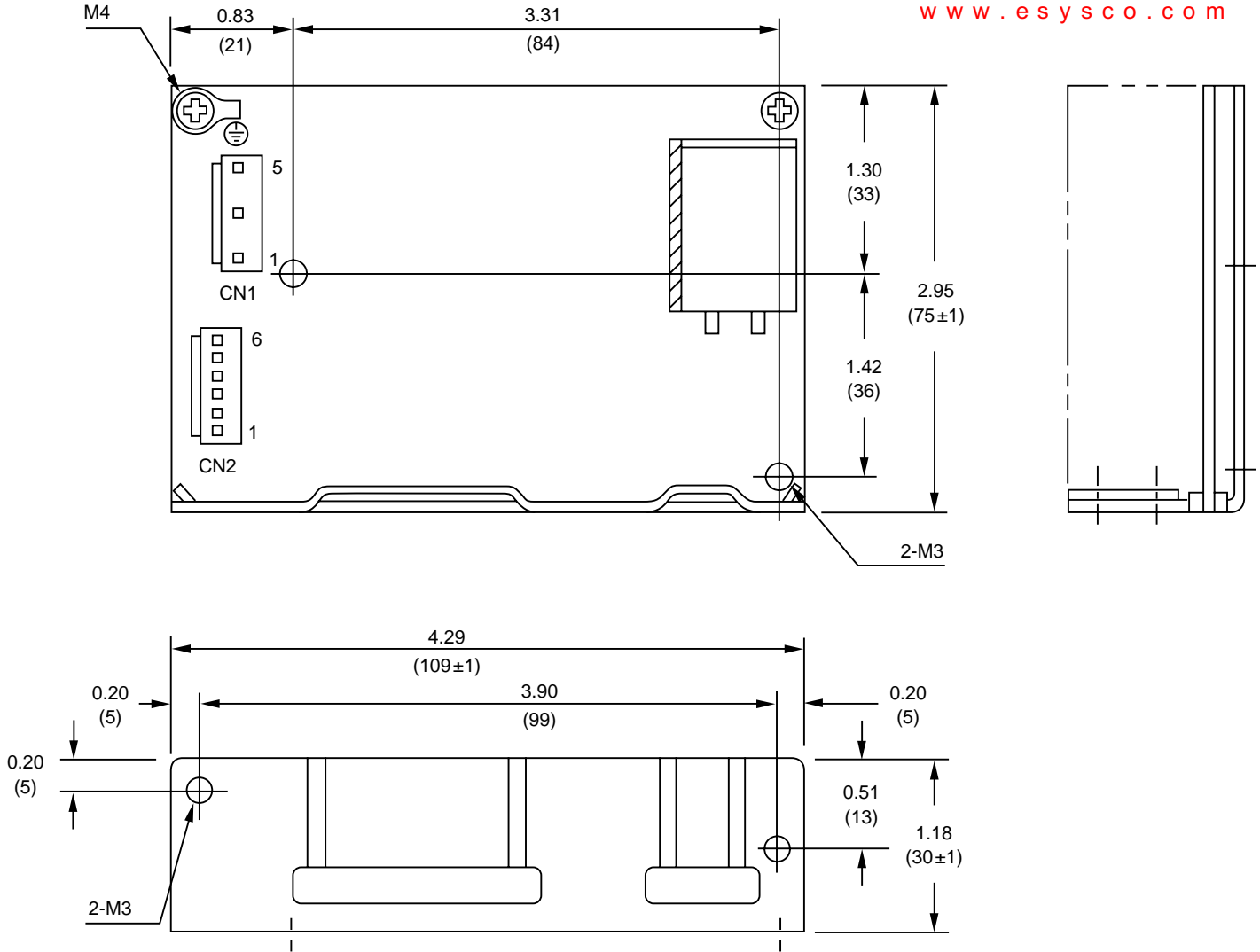
ESYSO AG

Sennweidstrasse 45
 CH-6312 Steinhausen
 Tel. +41 41 7401330
 Fax +41 41 7401335
 info@esysco.ch

www.esysco.com

MECHANICAL SPECIFICATIONS

Construction Open frame with integral L bracket.
 Optional cover available.
 Size (W x D x H) 4.29 x 2.95 x 1.2 inches (109 x 75 x 30 mm)
 Weight 7 oz. (200 g)



Dimensions in inches; () Dimensions in mm.

INPUT

CN1	1	SG
B3P5-VH (JST)	2	NC
	3	AC (N)
HOUSING	4	NC
	5	AC (L)
VHR-5N (JST)		
PIN SVH-21T-P1.1		

OUTPUT

		FYM180/51GP	FYM180/53GP	FYM150/58GP	FYM150/59GP
CN2	1	-12V	-15V	NC	NC
	2	G2	G2	-12V	-15V
	3	+12V	+15V	G1	G1
HOUSING	4	G1	G1	G1	G1
	5	+5V	+5V	+12V	+15V
VHR-6N (JST)	6	+5V	+5V	+12V	+15V
PIN SVH-21T-P1.1					

For Terminal Block connection information, see page 4